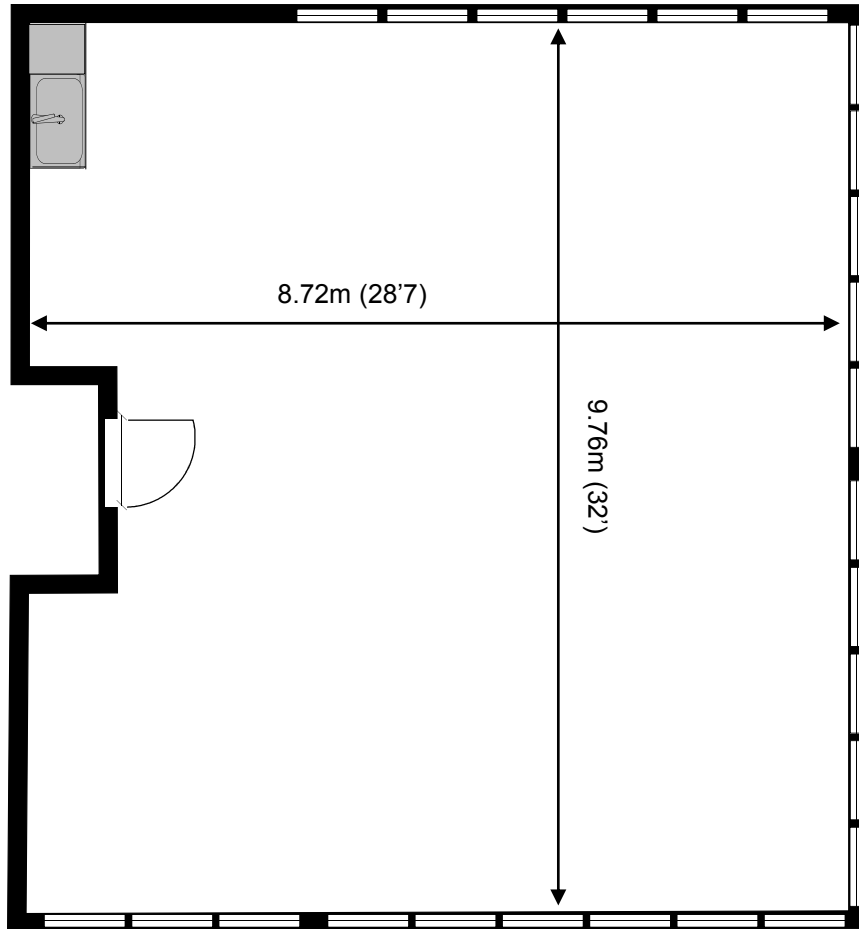


St George's Business Park

First Floor—Unit C15

82.7 sq m (887 sq ft)*



St George's Business Park
Castle Road
Sittingbourne
Kent ME10 3TB

*Approximate Measurements

Not to scale

Space for growing businesses

www.capitalspace.co.uk

St George's Business Park

First Floor—Unit C15

82.7 sq m (887 sq ft)*



Additional Information

First floor of main building with manned reception.

Wall of waist-high windows fitted with venetian blinds to three sides of the office.

Kitchenette area to rear.

St George's Business Park
Castle Road
Sittingbourne
Kent ME10 3TB

*Approximate Measurements

Not to scale