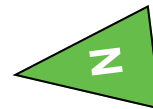
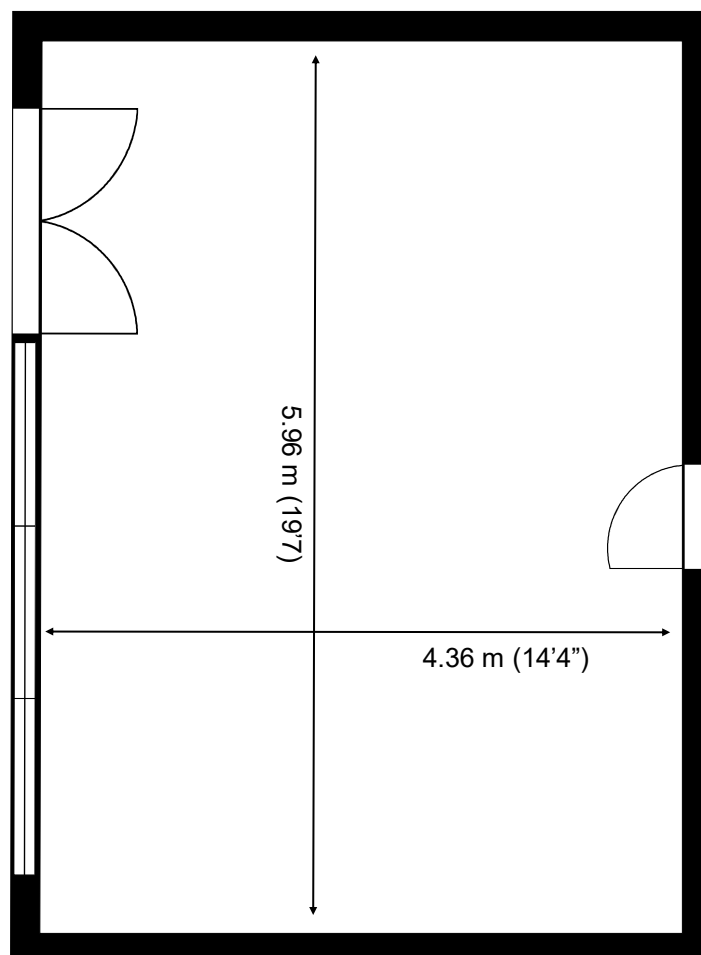


St George's Business Park

Ground Floor—Unit B14
25.5 sq m (275 sq ft)*



St George's Business Park
Castle Road
Sittingbourne
Kent ME10 3TB

*Approximate Measurements
Not to scale

St George's Business Park

Ground Floor—Unit B14
25.5 sq m (275 sq ft)*



Additional Information

We are happy to provide further details and answer any questions. Please contact our Centre Manager on 01795 432605.

St George's Business Park
Castle Road
Sittingbourne
Kent ME10 3TB

*Approximate Measurements
Not to scale