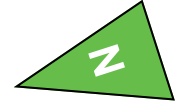
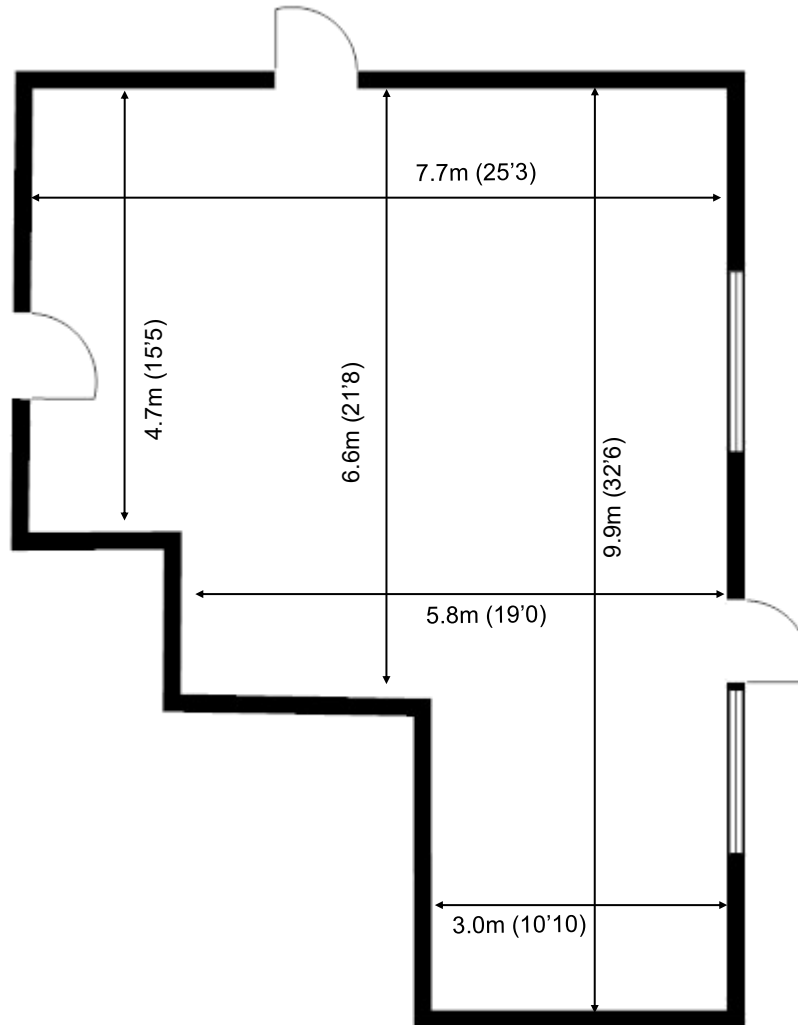


# St George's Business Park

Ground Floor—Unit C1  
58.3sq m (628 sq ft)\*



**St George's Business Park**  
Castle Road  
Sittingbourne  
Kent ME10 3TB

\*Approximate Measurements  
Not to scale

Space for growing businesses

[www.capitalspace.co.uk](http://www.capitalspace.co.uk)

# St George's Business Park

Ground Floor—Unit C1  
58.3sq m (628 sq ft)\*



## Additional Information

We are happy to provide further details and answer any questions. Please contact our Centre Manager on 01795 432605.

St George's Business Park  
Castle Road  
Sittingbourne  
Kent ME10 3TB

\*Approximate Measurements  
Not to scale