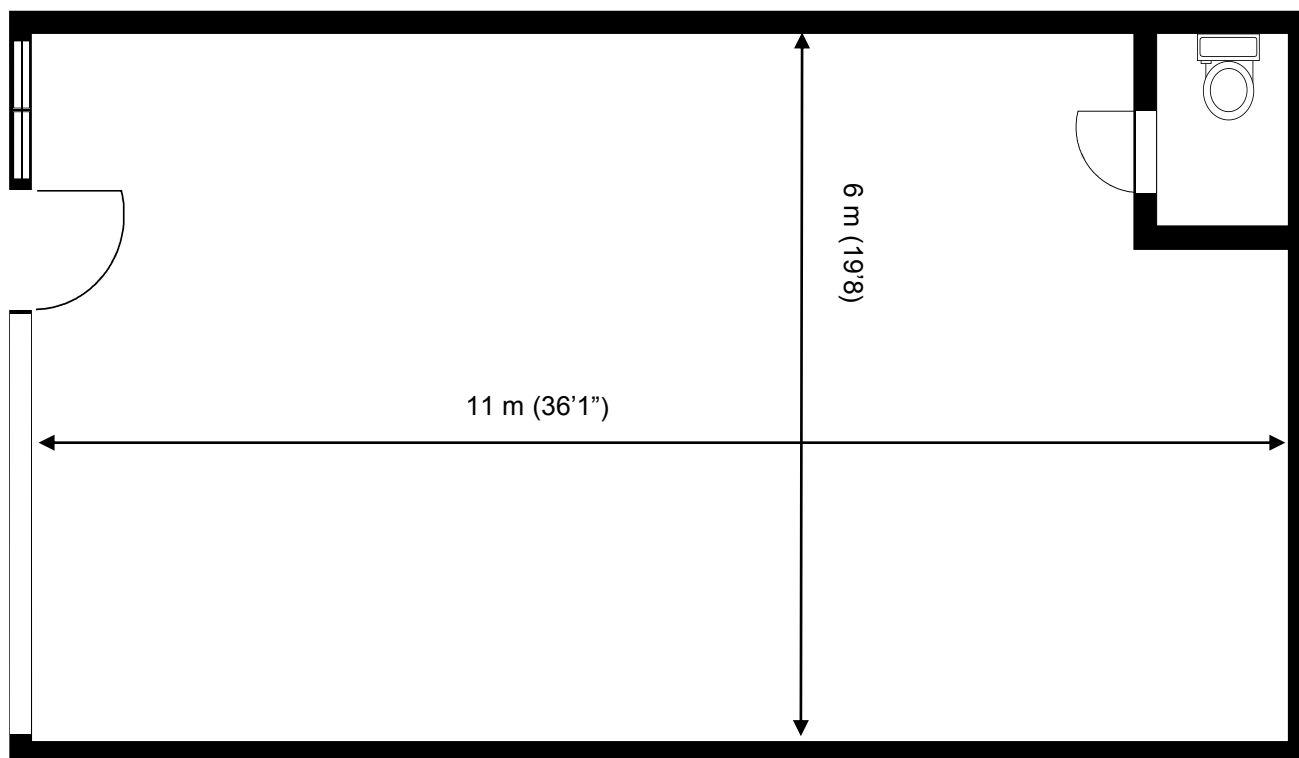
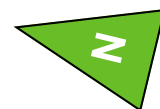


St George's Business Park

Ground Floor—Unit E1

60.9 sq m (655 sq ft)*



St George's Business Park
Castle Road
Sittingbourne
Kent ME10 3TB

*Approximate Measurements

Not to scale

Space for growing businesses

www.capitalspace.co.uk

St George's Business Park



Ground Floor—Unit E1

60.9 sq m (655 sq ft)*



Additional Information

We are happy to provide further details and answer any questions. Please contact our Centre Manager on 01795 432605.

St George's Business Park
Castle Road
Sittingbourne
Kent ME10 3TB

*Approximate Measurements

Not to scale